

1

SPIT BOX

Maple and pine, original chrome yellow painted finish, three fingers with symmetrically placed copper tacks, c. 1840, (note: one of the finest examples of this form of Shaker Cooper's work we've ever sold, its exceptional condition without tobacco stains shows that it was probably never used as a spittoon, but possibly as a measure or to hold yarns or soft goods), 4 1/4" h, 11" dia.

\$2,000-3,000



2

TWO BRUSHES

Delicately turned maple brush, with white horsehair bristles, 8" l; and an angled clothing brush, neatly formed and wire wrapped, 12 1/2" l, "Now we will be united and brush off pride and stiff, Come brush, yea brush and brush again till limber as a withe.", Index IV, *By Shaker Hands*, June Sprigg, 1975, A.A. Knopf, Inc. \$200-400



3

PEG BOARD

Pine board (7 1/2" w) in original brown stain, with three 2" maple pegs, and four 1" small cherry pegs, excellent condition, (note: possibly used for Sister's cloaks and bonnets), 35 1/2" l.

\$400-600



4

BERRY BOX

"Shakers made sturdy wooden berry boxes for their home grown berries; the boxes stacked neatly and had air holes to let the berries dry", p. 207, *By Shaker Hands*, June Sprigg, 1975, A.A. Knopf, Inc., pine, original finish, canted sides, "T" head nails, excellent condition, 5 1/8" h, 4 1/2" w.

\$200-400



5

TIGER MAPLE TILT CHAIRS

Three graduated maple slats with beveled tops, early varnish finish, cream and black woven seats (over earlier woven splint seats), room numbers on tops of front stiles, "12" and "10" (initialed V.E.D.), Watervliet, NY, c. 1840, tilters, excellent condition, (note: rare to find numbers and in tiger maple), 16 1/2" seat h, 41" overall h.

\$1,000-2,000



6

HANGING UTILITY BOX

Poplar, original varnish finish, shaped back with hole for hanging on a small peg, 3 1/2" deep well, single dovetailed drawer with small turned walnut pull, symmetrically "T" head nailed construction on bottom and sides, fine condition, 7 1/4" h (front), 10" h (back), 13 1/2" w, 6 3/8" d.
\$400-600



7

OVAL BOX

Pine and maple, original bittersweet red painted finish, four fingers right to left, attached with small copper tacks, wood pegged lid and base, very fine condition, found in Maine, 2 1/8" h, 4 5/8" l (at bottom).
\$2,000-3,000



8

DIPPER

Oak and maple, original dark varnish with patina, rare long handle (11 1/2"), measure is 3" h, 7" dia.
\$300-500



9

PAIL

Maple and pine, wire swing bail with wood handle, original green paint, stamped on base "NF Shakers, Enfield, NH", 7 3/4" h, 9 1/2" dia.
\$400-600



10

WASH STAND

Tiger maple, pine and poplar secondary woods, original varnish finish, top part canted with graduated and dovetailed gallery, 2 3/4" h, over a tiger maple skirt, with finely dovetailed drawer, with a beveled and lipped tiger maple front, and a very fine turned cherry pull, tapered and turned legs, with evidence of Sister's wet mop at foot, c. 1830, 28" h, 18 3/4" w, 15 3/4" d. [Note: This stand, in our opinion, is one of the finest classic Shaker wash stands that we have ever had the honor of representing at auction. See p. 189, *Complete Book of Shaker Furniture*, Rieman, #128, Attributed to Brother Abner Allen (1776-1855), Enfield, CT.]
\$15,000-20,000



11

FIVE SHAKER STYLE BASKETS

Kittenhead styles, four with hoop handles and one with double side handles, all made by Martha Wetherbee (MW - '83), 6 1/4" to 4 1/4" h (to handle).
\$400-800



12

SHAKER WINDOW HOLDER

Rectangular tiger maple block, symmetrically drilled holes on all four sides, separate cast iron "L" shaped window support, used to adjust the height of the open window, (note: another Shaker inspired utilitarian use of tiger maple), (sold WHA 10-14-07 lot 369), 19 1/2" h.
\$300-500



13

OVAL BOX

Maple with ash lid, original nut brown patinated finish, three fingers, very good condition, small size - 1 1/2" h, 3 1/2" l.
\$500-1,000



14

OVAL BOX

Maple and pine, very light, original yellow varnish stain, rare interior Shaker label "Janett Angus, Watervliet, N.Y.", with handwritten ink "Miriam P. Taylor. Presented this Box to me in 1847 when living in Alfred", also signed on bottom "Miriam Taylor, Alfred, Maine", excellent condition, 1 3/4" h, 4 1/2" l.
\$1,000-2,000



15

SIDE CHAIRS

Rare pair of tilt chairs with original pewter tilters, (one pair unattached), cherry with original brown stain, three slats, cane seats, New Lebanon, NY, c. 1830-1840, excellent condition, 16 1/2" seat h, 40 3/4" overall h, (ex. Dr. Sprowls collection; ex. Doug Towle collection, lot 144; ex. John Broome collection, New Lebanon, NY).
\$2,000-4,000



16

THREE FRAMED LEAF IMPRINTS

Made by Elder Henry Blinn, Canterbury Shakers, N.H., authenticated by Sister Bertha Lindsay (in her handwriting on label on the back), original green imprints with black ink descriptions in Latin and English, including: Vervain, Trumpet Milkweed, Panicked Elder, Pea Vine, Burdock Milkweed, (sold Northeast Auctions, #730), 10 1/2" x 7 3/4" w (sight), 14 3/4" x 11 3/4" (frame).
\$500-700



17

TIN HERB CANNISTER

Rare unopened cannister, tall, cylindrical and lidded, original Shaker black painted wraparound label "Bittersweet, Solanum dulcamara, D.M. Prepared in the United Society, New Lebanon, N.Y.", impressed "Y" on bottom, (note: Isaac Youngs was a New Lebanon tinsmith, among his many other occupations), 8 1/2" h, 2 3/4" dia.
\$200-400



18

OVAL BOX

Pine and maple, original chrome yellow varnished wash/stain, inscribed in pencil under lid "Amy P. Bowers, February 13, 1881.", (note: Sister Amy Bowers, a Shaker weaver, was born in 1861 and was living with the Shakers at the Canaan, NY Shaker community, and was listed in the U.S. Census of 1880 as a Shaker member), 1 3/4" h, 5 1/8" l.
\$2,000-4,000



19

RARE PAMPHLET: THE SHAKERS' MANUAL

(David Parker, Trustee), "Shaker Village, Merrimack Co., N.H. 1852", 24 pages intact, shows edge wear, some stains, stitched binding, back page shows some tears, 9 1/2" x 5 1/2", (see *From Shaker Lands and Shaker Hands: A Survey of the Industries*, M. Stephen Miller, 2007, p. 74).
\$300-400



20

SISTER'S SEWING TABLE

Exceptional tiger birch legs, skirt and drawers, original varnish, pine top (single 25" wide board), in original bright red stain, with applied raised and beveled rim, (to secure sewing items from falling off), finely dovetailed drawer with very fine classic Shaker cherry pull, medial poplar wood shelf, with applied raised edge on back and sides for extra fabrics and yarns, tapered square legs terminating in original brass casters, pegged and nailed construction, Canterbury, NH, c. 1840, (sold WHA, 10-14-07, lot 55), 24" h, 36" w.
\$8,000-12,000



21

TWO 19TH C. SHAKER SCATTER RUGS

Cotton scraps woven on a rug loom, multicolor with darker ends, overall good condition, (some minor unraveling on one end of darker rug), 46" l, 23" w.
\$300-500



22

RARE TWO-SLAT CHILD'S CHAIR

Maple, original light brown varnished stain, original multicolor woven tape seat, Shaker hand-forged iron sleeve to repair split in back left foot, old Boston moving label on back left stretcher, Canterbury, NH, c. 1840, overall good condition (in-use wear), excellent patina, 11 1/2" seat h, 30" overall h.
\$1,000-2,000



23

RARE SISTER'S FOOTREST

Maple and walnut, original red/brown painted finish, two levels, upper and bottom sections with molded rectangular boards, supported with turned legs, medial scribe lines, bottom signed in black ink/script "B. Elizabeth, 1810", WHA auction tag from 1980's, 9 1/4" h, 13" l, 7" w.
\$400-600



24

FOUR SISTER'S POPLARWARE BOXES

Lidded and edged with kid leather, tied with blue and purple silk ribbons, long rectangular box with blue silk lined interior is ink stamped "Sabbathday Lake Shakers, Maine" on bottom, 2 1/4" h, 9 3/4" l, 5" d, overall good condition.
\$400-600



25

BLANKET CHEST

Pine, original red painted finish, six-board in the classic style, dovetailed case, dovetailed base, butt hinges, interior till, original key, Watervliet, NY, c. 1840, good condition, 23 1/4" h, 34 3/4" w, 18" d.
\$2,000-4,000



26

UNIQUE SHAKER CRUTCHES

Oak and cast and wrought iron, shaped arm cups, pegged onto octagonal shaped tapered shaft, with retractable spikes for walking on icy surfaces, (museum quality condition), from a New Lebanon, NY collection, shows Shaker ingenuity and craftsmanship, c. 1880, (sold WHA, 9-4-05, lot 359), 49" h.
\$400-600



27

RARE TALL TILT CHAIR

Cherry wood, original dark red walnut stained finish, two-slat back with beveled top edge, caned seat, double stretchers front, back and sides, probably used in weaving, good overall condition, Harvard, MA, c. 1840, 22" seat h, 41" overall h.
\$1,000-2,000



28

OVAL BOX

Pine and maple, original cherry red painted finish, four fingers, excellent overall condition, c. 1830-1840, painted on base, very finely carved fingers, 2 1/2" h, 6 3/8" w.
\$2,000-4,000



29

OVAL BOX

Pine and maple, original dark blue painted finish, three fingers (right to left), small nick out of rim on left front, overall good condition, Sabbathday Lake, ME, c. 1840, painted on base, 2 3/4" h, 7 3/4" w.
\$2,000-4,000



30

OVAL BOX

Pine and maple, original varnished chrome yellow finish, four fingers (right to left), finely carved with top finger 1/4" shorter, overall good condition, c. 1830-1840, 3 1/2" h, 8 5/8" l.
\$3,000-6,000



31

OVAL BOX

Pine and maple, original sky blue painted finish, four fingers, 1 3/4" l, some minor inpaint on lid, overall good condition, c. 1840, 3 1/4" h, 8 7/8" w.
\$2,500-5,000



32

OVAL BOX

Maple and pine, original heavy dark green painted finish, four fingers (right to left), possibly Sabbathday Lake or Alfred, ME, partial paper label on back, 3 3/4" h, 10 1/2" w.
\$2,000-3,000



33

OVAL BOX

Pine and maple, original light mint green painted finish, four fingers (right to left), 2 1/2" l, excellent overall condition, c. 1840, 4 3/4" h, 11 3/8" w.
\$2,000-3,000



34

RARE CHILD'S "O" ARMCHAIR

Brother Robert M. Wagan & Co., Mt. Lebanon Chair Factory, c. 1880, maple, original dark stained finish, original beige and cranberry red tape back and seat, acorn finials, overall good condition with some normal wear, c. 1870-1880, 7 1/4" seat h, 23" overall h.
\$600-1,000



35

SHAKER VEGETABLE STORAGE COUNTER

Cherry wood, 12 graduated and dovetailed drawers, four banks of three drawers, each stenciled in yellow letters, yellow, red and white onions, flat and long turnip, ruta бага, yellow tomato, original turned wood pulls, (note: original built-in on left side), breadboarded top, Tyringham, MA, c. 1850-1860, 33" h, 81" w, 39" d.
\$6,000-9,000



36

DIPPER

Maple burl, finely turned and carved from one piece, exceptional patina, small numbers under the handle - probably collector's numbers, Hancock, MA, c. 1830-1840, (note: the only Shaker dipper we've ever seen in burl), 5 3/8" l, 3 3/4" dia.

\$1,000-2,000



37

ROLLING PIN

Turned maple, finely turned handles, with double medial scribe lines, (note: the longest Shaker rolling pin we've seen), 34" l, 2" dia.

\$300-500



38

THREE BOTTLES

"Mother Siegels Curative Syrup...A.J. White", labeled with contents and cork, 5" h; Amber bottle embossed "Shaker Hair Restorer", 7 3/4" h; "The Shaker Digestive Cordial...A.J. White", with contents and cork, 4 1/4" h.

\$300-500



39

THREE BOOTSCRAPES

Forged and cast iron, flat scrapes, turned and curled tops, 15 1/2" h, 11" w; 9" h, 11 1/2" w; and 6" h, 9 1/2" w.

\$200-400



40

WOOD BOX

Pine, original gray over red primer finish, hinged lid with beveled edge, dovetailed case, brass pull/hanger on upper left side for brush or shovel, sectioned interior for kindling and stove logs, c. 1850, 22 1/4" h, 32 5/8" w, 15 3/4" d.

\$1,000-2,000



41

THREE SCOOPS AND THREE SHOVELS

Maple, large carved handle from single board, 14" l, 6" w; Wood stirring paddle with open carved handle for hanging on peg, 17" l; Carved scoop with shaped maple handle, dark patina, 11 1/2" l; Three shovels, probably for Sister's kitchen use, 29" l, 23 1/2" l in old blue/gray paint, 7 1/2" l for measuring; (ex. Doug Towle collection).

\$300-400



42

CARRIER

Maple, pine and hickory handle, original dark pumpkin red/orange painted finish, finely carved hoop handle, four well defined fingers, handle has a smooth patina and good condition, 4" h (to rim), 7" h (to top of handle), 11 1/8" l, 7 1/2" d.

\$3,000-4,000



43

THREE SHAKER STYLE BASKETS

Kittenhead, hoop handle (cherry), and a cherry wood double wrapped rim, signed on base "JEM, 86", 4" (to top of handle), 3 7/8" dia (at rim), string holder, Two separate fitted baskets with loop ring hanger, signed "JEM"; Kindling carrier with tall hoop handle, lined with blue striped mattress ticking, stamped "JEM" on base, 17 1/2" h (to top of handle), 19 1/2" l, 13" w.

\$300-500



44

BUTTER CHURN

Pine, original red painted finish, three entwined wood laps, wood dasher and beveled lid, (some splits with wire repairs at rim), fitted wire band at base, 43 1/2" h, 9 1/4" dia (at top), 12" dia (at bottom).

\$1,000-1,500



45

TWO DRAWER BLANKET CHEST

Pine, original blue painted finish, dovetailed drawers, turned wood pulls, bootjack ends, found in NY state, possibly Watervliet, NY, c. 1830-1840, 45" h, 42" w, 18 3/4" d.

\$4,000-6,000



46

WOVEN RUG

Bar pattern with documented twisted design, 44 1/2" l, 26" w, (ex. Dr. Sprowls collection; ex. Doug Towle collection, sold by WHA 9-4-05, lot 299).
\$300-500



47

RARE SHAKER CANE

Hickory branch with bark, peg attached, carved and bent handle, stamped on both sides "Jas. X Smith, New Lebanon." (James X. Smith, 1806-1888), 36 1/2" l.
\$1,000-2,000



48

SHAKER WALKING STICK

Tiger maple, octagonal carved tapered shaft, c. 1840-1850, see *By Shaker Hands*, June Sprigg, 1975, A.A. Knopf, Inc., 36" l.
\$300-500



49

LOG MEASURE

Cherry wood, two vertical measures, both double pinned and lambs tongue chamfering, one stable and one slides across a carved and hand number stamped horizontal board, exceptional Shaker craftsmanship and patina, museum quality, 19 3/4" h, 38 1/2" l.
\$600-1,200



50

GRAIN BIN

Pine, original dark strawberry red painted finish, four sections, each butt hinged and breadboarded, single board sides with tall arched cutout foot, c. 1860, (found in New Hampshire - Canterbury or Enfield), 27 1/2" h, 54" w, 18" d.
\$1,500-2,500



51

GARDEN WINNOWING BASKET

Black ash splint, openwork bottom, 4" shallow sides, braided hemp, corner tie for hanging on a peg, 34" l, 30 3/4" w.
\$500-700



52

ANGLED SEED DISPLAY UNIT

Pine, original dark stained finish, 35 sections for seed packets, lower front board painted "Shaker Seeds" in black script, c. 1880, (note: used in a country store for seed sales - a rare form), 15 1/2" h, 24 5/8" w, 3 1/2" d.
\$600-900



53

SEED PACKET STORAGE CABINET

Pine, original light pumpkin orange stained finish, three graduated drawers, lipped edges, original finely turned pulls, advertising paper lined drawers, "Garden Seeds Are The Best. If You Want a Splendid Garden Buy Them. Put up by the Shaker Seed Co., D.M. Mount Lebanon, N.Y.", second drawer lined with colorful wallpaper, third drawer lined with colorful vegetable Shaker lithograph, "Mt. Lebanon, N.Y. Garden Seeds", lock and tin diamond escutcheon plate, 12" h, 16 1/2" w, 16 3/4" d.
\$1,500-2,500



54

FRAMED BROADSIDE

Colorful lithograph, "Shakers Dried Green Sweet Corn", showing an ear and cornstalk in a Trademark shield, "Prepared by D.C. Brainard, Shaker Village, Mount Lebanon, N.Y.", "Crump Label Press, NY & Chicago", 13 3/4" x 11" (sight).
\$300-600



55

SMALL ROUND WORK TABLE

Butternut top, cherry wood base, square tapered legs, with separate leg for leaf support, double pegged legs into skirt, stamped on top "CHH, A1", c. 1830, good condition, (sold WHA, 10-14-07, lot 172), 28" h, 27 3/4" dia top.
\$2,000-4,000



56

MORTAR AND PESTLE

Tiger maple, footed mortar, 7" h, 5 1/2" dia; finely turned pestle, 10 3/4" l, c. 1850.
\$300-500



57

BOTTLE FILLER

Maple, tin funnels, adjustable horizontal platform, carved for four funnels, threaded thumbscrew, rectangular beveled base, good patina, New Lebanon, NY, c. 1840, 17" h, 15" w (base), 5" d.
\$500-700



58

BOTTLE

Aqua, hand blown, broken pontil base, contains original dark liquid, labeled "Tinct. Rhubarb", "Prepared in the United Society by D.J. Hawkins, New Lebanon, N.Y.", waxed cork with hinged tin pull, separate top label reads "...fluid ounce of this Preparation contains grains of CODEINE.", 5 1/2" h.
\$200-400



59

DOLL'S BONNET AND PINCUSHION

Oval wallpaper box, with fitted lid, poplar doll's ware bonnet, lined in soft gray silk, green silk ribbon, 1 3/4" h, 2" l; and a woven sweetgrass and splint basket, with inset tomato pincushion, 1" h, 1 1/4" dia.
\$200-400



60

CHILD'S CRADLE

Pine, original red painted finish, two brass carrying handles, ends rounded, Watervliet or New Lebanon, NY, 22" overall h, 41 1/2" l, 23" w (at rockers), 13 3/4" w (inside).
\$500-700



61

TWO EXCELLENT SHAKER DRESSED DOLLS

Very fine carved wood with painted features, black painted hair, blue eyes, long cotton dress, pleated in small black and white stripe, six buttoned "Bertha" with white trim, dark purple silk bonnet with white silk interior and ribbon, 13" h; 19th c. porcelain doll, with brown eyes and open mouth, blonde hair with straw bonnet trimmed in kid leather, gray wool pleated dress with matching "Bertha" trimmed in white, matching gray hooded Shaker cloak, 12" h.
\$600-900



62

CUPBOARD OVER CASE OF DRAWERS

Pine, refinished with traces of original red stain, cornice molded top over two raised panel doors with separate cupboards, left hand with cut out recessed shelf, over two small drawers, over five graduated and dovetailed drawers, Hancock Bishopric, probably Enfield, CT, c. 1840, (note: drawer and dovetail detail associated with Abner Allen, Grove Wright school of craftsmanship), small repair to back left side, 77 1/2" h, 38 3/4" w, 19" d. [Note: From the estate of Professor John Faurey (Texas A&M University). He purchased the cupboard in the 1950's in Philadelphia upon his graduating from PENN.]
\$9,000-18,000



63

TWO SHAKER DRESSED DOLLS

Armand Marseille, bisque head, in blue dress, blue wool cape, poplarware bonnet, 12" h; German doll, bisque head and hands, pink satin dress and bertha, lace and white pearl buttons, poplarware bonnet with pink ruffle (sold WHA, 7-30-06, lot 62), 16" h; (note: both found in Maine).
\$700-1,000



64

THREE SHAKER DRESSED DOLLS

Shaker made navy cotton pleated dress, edged cuffs and bertha, poplarware bonnet, 14 1/2" h; Composition doll with taupe pleated dress, bertha with tiny white button beads, summer woven cloth bonnet, 10" h; Composition doll, light brown pleated dress, lace trimmed bertha, large poplarware bonnet with kid trim (some missing), 16" h; Overall very finely dressed dolls, New Lebanon, NY, c. 1930.
\$800-1,200



65

EXCEPTIONAL AND RARE ELDER'S CHAIR

Maple and birch, original dark stained finish, five graduated and beveled slats, finely shaped arms pegged into delicately turned stiles, early natural rush seat, original carved rockers, Canterbury, NH, 1820-1840, 17 1/2" seat h, 50" overall h. [Note: Best patina and in-use wear on arms and back, matching rocker at Art Complex Museum, Duxbury, MA; very comfortable!]
\$10,000-15,000



66

FOUR SISTER'S WOVEN KERCHIEFS

Shades of blue and white, striped and checkerboard patterns, one converted later to a laundry bag with embroidered initials "SA.", North Family, New Lebanon, NY, c. 1850, (note: from an early collection of the late James H. Bissland, Jr., who primarily bought from the North Family Shakers, New Lebanon, NY, in the 1950's).

\$300-500



67

OVAL BOX

Maple and pine, with a cedar top, original natural finish, three finely shaped fingers, c. 1850, excellent condition, 5 7/8" l, (ex. Courcier/Wilkins collection).

\$300-500



68

TWO SIDE CHAIRS

Cherry wood, three graduated slats, cane seats, both with tilters, Harvard, MA, c. 1830-1840, 20" seat h, 42 1/2" overall h (right side rail shows split, stable condition); smaller chair 17 1/2" seat h, 40" overall h (good condition).

\$1,000-2,000



69

RARE PAIR OF BROTHER'S BREECHES

Linen, tagged "Linen Breeches made from Shaker woven cloth and used by Shaker brothers for summer wear, Given by Sister Grace Dahm", New Lebanon, NY, initialed "GW", (note: from an early collection of the late James H. Bissland, Jr., who primarily bought from the North Family Shakers, New Lebanon, NY, in the 1950's).

\$300-500



70

TRIPOD STAND

Cherry wood, original red stained finish, round top, bulbous turned shaft, on three arched legs, with tin plate underneath with original screws, "No 1" painted on the cleat in white refers to the room number of the Shaker Dwelling, Watervliet, NY, c. 1840, 26 3/8" h, 18 3/8" dia top. [Note: see *The Encyclopedia of Shaker Furniture*, Rieman/Burks, fig. 316-316A, p. 229; and an oral history of being used at Watervliet by Sister Anna Case (1855-1938).]

\$8,000-12,000



71

THREE SISTER'S FABRIC PIECES

Linen kerchief, tagged "woven by Eldress Anna Case at Watervliet, 1860. Owned by Eva Larkin, (initialed "E L" in blue), caretaker of Grace Dahm"; Silk kerchief, beige, "woven from home raised silk"; "Shaker woven linen Towel, given by Jennie M. Wells."; (note: from an early collection of the late James H. Bissland, Jr., who primarily bought from the North Family Shakers, New Lebanon, NY, in the 1950's).

\$300-500



72

THREE SISTER'S FABRIC PIECES

Woven red and black wool plush chair back, tagged "woven at second family, New Lebanon, from effects of Sarah Collins", 11" x 22"; Pair of woven cotton stockings, marked "A D", 20" l; Finely woven cotton sheet, marked "S H, No. 13.", New Lebanon, NY; (note: from an early collection of the late James H. Bissland, Jr., who primarily bought from the North Family Shakers, New Lebanon, NY, in the 1950's).

\$300-500



73

LEAF CARVED FANCY WORK BOX

Bird's-eye figured maple, original light brown stained finish with patina, wood pinned, hinged lid, (note: made completely without nails or screws by Brother Thomas Fisher, Enfield, CT, c. 1900), 4" h, 11 1/4" l, 6 3/4" d.

\$400-600



74

SISTER'S 19TH C. WOVEN BLANKET

Light wool blanket, fringed blue and light beige, 1/2" square pattern, 62" x 64".

\$300-500



75

LAUNDRY BENCH

Pine, original brown stained finish, six slat runners, 54" l, on six lamb's tongue chamfered legs, 17" h, 15 1/4" w, through mortised and wood pegged, possibly used for baskets of wet laundry, as it shows evidence of drip along sides.

\$1,000-1,500



76

BONNET BOX

Maple and pine, original varnish finish, iron tacked closure, single finger on lid, 10 3/4" h, 14 1/2" dia.
\$400-600



77

LAUNDRY CARRIER

Pine, original unfinished patina, half round form, with handles at top for two Sister's to carry wet laundry, 19 turned and carved slats mortised through the sides, 10 1/2" h, 23 1/2" l (handle to handle), 13 1/2" w.
\$400-600



78

LAUNDRY CARRIER

Pine, original light gray/green painted finish, square form (20" at top) with canted sides, carved handles attached on bottom for two Sister's to carry wet laundry, intricate checkerboard laced bottom with nine 3" squares, nailed support boards at corners, 8 1/2" h, 26 1/4" l (handle to handle), 15" sq bottom.
\$400-600



79

HANGING DRYING RACK

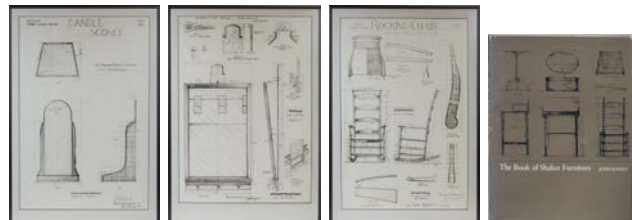
Bird's-eye maple, expanding arms, with ten finely turned and figured maple pegs, original varnish finish, square head nails used in construction, (note: a rare and fine Shaker form, c. 1850-1870), 25 1/2" l, 4" d in folded form, 3" pegs, mortise through each arm.
\$600-900



80

THREE DRAWINGS, AND A BOOK

Original John Kassay detailed drawings of Shaker furnishings, for *The Book of Shaker Furniture*, along with a copy of the book signed and inscribed "to Vernon and Virginia Squire by John & Mary Kassay, 1996", finely framed and matted pictures include "Rocking Chair", p. 94, "Mirror and hanging rack", p. 165, and "Candle Sconce", p. 189, 23" x 16" (sight), 26" x 18 1/2" (frame).
\$600-900



81

HANGING MIRROR RACK

Tall pine back with hole for peg, lipped shelf for mirror, original stained varnish finish, c. 1830-1850, small brush peg at base is missing, otherwise excellent condition, 25 3/4" h, 18" w.
\$800-1,200



82

TWO PEG RAILS

Pine, original yellow painted finish, 8' 5" and 7' 3" l, 2 3/4" w, 2 1/4" pegs finely turned cherry or stained maple, eight pegs in longer rail, and six pegs in shorter rail, Watervliet or New Lebanon, NY, c. 1830-1840.
\$600-900



83

TREE OF LIFE

20th c. printed and colored reproduction of the Shaker Spirit watercolor of the Tree of Life by Hannah Cahoon, originally in the collection of Ed Clerk, 22" x 27" (sight), 30 1/2" x 36" (frame).
\$300-500



84

TOWEL RACK

Pine, original dark varnish stained finish, two rectangular bars, through mortised into the rectangular vertical sides, extending and mortised down into the carved and slightly arched feet, 27" h, 18" w.
\$300-500



85

WAGON BENCH

Maple, old gray/green painted finish, double oak slats, double pegged into heavy central stile, black ash splint seat, turned arms, pegged, 10 stretchers, Watervliet, NY, c. 1840, overall good condition, 14" seat h, 32" overall h.
\$1,500-2,500



86

DRYING RACK

Ash and pine, original patinated finish, double rectangular bar top, through mortised and pinned, vertical bars with two horizontal pieces mortised and wood pinned, slightly arched trestle foot, through mortised and pinned, paper label "10" on one end. [Note: An exceptional and rare classic Shaker form, with the room number on one end, and from the Kitty Haas collection, who had purchased many pieces at The Shaker Collection Auction of the late George and Gladys Jordan of Epping, NH, held in Concord, NH, 9/27/68.]

\$2,000-4,000



87

STANDING DUST PAN

Turned long maple handle with knob top, original brown stained finish, crimped sheet tin pan in dark japanned finish, double scribe lines on handle, c. 1850, (Kitty Haas collection), 31 1/4" h, 13" w, 9" d. \$500-800



88

PAIL

Pine, original red painted interior and yellow exterior, diamond shaped bail plates, two steel bands with pointed ends, signed twice on bottom in black "Berry" and "No. 9", purchased at the Jordan Auction, Concord, NH, 9/27/68, (Kitty Haas collection), 6" h, 8" dia.

\$1,000-2,000



89

PAIL

Pine, original chrome yellow interior and dark raspberry red exterior, bail handle with teardrop shaped tin bail plates, two bands with pointed ends, "#3" on bottom, (one stave shows a split), gray attached tag with auction lot 375 from the Jordan auction, Concord, NH, 9/27/68, (Kitty Haas collection), 6" h (to rim), 7 3/4" dia.

\$1,000-2,000



90

LARGE BEAN PAIL

Pine, original dark yellow stained finish, "Beans." in black paint at front, heavy wire bail handle with turned maple grip, double riveted rectangular bail plates, two double riveted steel bands with pointed ends, overall good used condition, c. 1850, purchased at the Jordan Auction, Concord, NH, 9/27/68, with original auction tag lot 76, (Kitty Haas collection), 11 1/4" h (to rim), 12" dia.

\$2,000-4,000



91

CANDLESTAND

Walnut, original dark varnish stained finish, one board circular top, with original small rounded, rectangular cleat and wood pegged into shaft, attached to top with six screws, tall slender shaft, three snake legs, dovetailed and held with tin plate, overall good used condition, c. 1820-1840, (Kitty Haas collection), 26 1/2" h, 16 1/4" dia.
\$3,000-5,000



92

LIDDED PAIL

Pine, original ministry blue painted finish, turned lid with raised circular section, double riveted metal rim with half circle end, wire bail handle with turned maple grip, oval bail plate, two steel bands double riveted with half round ends, purchased at the Jordan Auction, Concord, NH, 9/27/68, with original auction tag, (Kitty Haas collection), 9 1/4" h, 11 5/8" dia.
\$1,000-2,000



93

LIDDED STORAGE CONTAINER

Pine and poplar, original natural finish, poplar bands with elongated fingers secured with large head copper tacks, wood pinned construction, (Kitty Haas collection), 9" h, 11" dia.
\$600-900



94

LIDDED PAIL

Pine, original red/brown stained finish, turned lid with raised circular section, double riveted metal rim with slight half circle point, diamond bail plates, metal bail with black painted birch grip, two steel bands with pointed ends, stamped on bottom "NF Shakers, Enfield, N.H., 2", 9 3/4" h, 12" dia.
\$600-900



95

TWO SIDE CHAIRS

Maple and birch, original dark brown and original light brown stains, elegant elongated flame finial, Enfield, NH, c. 1840-1850, both with cane seats, both had tilters (buttons are missing, and top slat is missing a section on darker chair), 17 1/2" seat h, 40 1/2" overall h, and 16" seat h, 40 1/2" overall h.
\$1,000-2,000



96

SLIDE LID WORK BOX

Highly figured birch, finely dovetailed rectangular form, double inset lids with carved finger notches, partitioned interior, Enfield or Canterbury, NH, c. 1830-1840, 3 1/2" h, 9 5/8" l, 7 3/4" w.
\$400-600



97

RARE DOUBLE LID SIEVE

Pine and maple, original natural finish, symmetrically nailed copper tacks, woven silk interior sieve, finely repaired split on rim of lid, exceptional construction, c. 1840-1850, 4" h, 7" l, 5 1/8" w.
\$600-900



98

LARGE OVAL BOX

Pine and maple, original natural finish, five fingers, c. 1850, overall good condition, copper tacks, 6 1/4" h, 14 5/8" l.
\$1,200-1,800



99

SMALL OVAL BOX

Pine and maple, original natural varnished finish, three fingers, c. 1840, overall good condition, small nick off end of rim finger, copper tacks and wood pegs, 1 3/8" h, 3 1/2" l.
\$600-800



100

SISTER'S SEWING DESK

Pine, traces of original red finish, two drawer top section, single board sides with sloping top section, interior well, four graduated T-head nailed and lipped drawers below, with sliding work shelf with breadboard ends below the top drawer, original Shaker hardwood drawer pulls, each with central dimple (characteristic of Canterbury, NH), two drawers have locks with brass diamond shaped escutcheon plates, gently sloping cut out front and side feet, overall good condition with minimal wear, Canterbury, NH, c. 1850, 36 1/2" h, 23 1/4" w, 19 1/4" d.
\$6,000-9,000



101

TWO ROUND PANTRY BOXES

Maple and pine, original finish, painted lids by Sister Cora Helena Sarle, summer landscape with trees and dirt road leading across a covered bridge, 2 1/4" h, 5 1/2" dia; blue background with daisies and cherry blossoms, 2" h, 4 1/2" dia; Canterbury, NH, (ex. Doug Towle auction, 9-4-05, lot 179).
\$600-800



102

SMALL OVAL BOX

Maple and pine, three fingers, natural finish, c. 1840, lid painted mid 20th c., with red rose bud and forget-me-nots bouquet tied with a blue ribbon bow, by Sister Cora Helena Sarle, Canterbury, NH, and a colored "M" on inside of lid in tarragon and red berries, (probably gifted to a Shaker Sister by Sister Cora), (sold WHA, 10-10-04, lot 106), 1 1/4" h, 3 3/8" l.
\$800-1,200



103

CORA HELENA SARLE PAINTING

Oil on panel, framed (small part of silver missing lower right), pond and paper birch trees at sunset, (sold WHA, 10-10-98, lot 73C), small watercolor card on back with New Hampshire mountains, initialed "C.H.S.", 20" x 16" (sight).
\$500-700



104

OIL ON CANVAS

Stretched on a window screen frame, landscape with tree and pond at sunset, pink sky, signed in pencil on back "Helena Sarle, Canterbury, N.H.", (sold WHA, 10-10-04, lot 109), 32 1/2" h, 9 3/4" w.
\$500-700



105

HANGING CUPBOARD

Pine, traces of original red stain, inset panel door, through mortised and double pinned frame on the diagonal, half round molded top board, plank sides, half round molding applied at base, original walnut classic dimpled Canterbury pull, small inset rectangular piece of bone on door frame, and a wire and button door closure, four shelf yellow and beige interior, Canterbury, NH, c. 1840-1860, good condition, excellent proportions, (sold WHA, 6-28-03, lot 115), 31 1/2" h, 18 1/2" w, 11 1/2" d.
\$1,500-2,000



106

SHAKER MEETING HOUSE

Oil on circular board, showing the Meeting House at Canterbury in the fall, with a white banner at the bottom "Shaker Meeting House 1792.", signed "C.H. Sarle", framed and matted, 13 1/2" dia, (ex. Doug Towle collection, 9-4-05, lot 262).

\$1,000-1,500



107

CHILD'S DUST PAN, SISTER'S PINCUSHION

Both with scenes painted by Sister Cora Helena Sarle, tin dust pan with oil painting of red house with chimneys on a pond, 4" h, 4 1/4" w; and a Sister's silk ribboned round pincushion, with oil painting of a tree lined snowy path to a church with tall spire, 4 1/4" dia; (sold WHA, 10-10-04, lot 107).

\$500-700



108

LARGE OIL BY CORA HELENA SARLE

Oil on early 19th c. chestnut raised panel board, winding road through a grove of leafy birch trees, with a sunset pink and white cloudy sky, (sold WHA, 5-29-11, lot 117), 42 1/2" h, 17 1/2" w.

\$1,000-1,500



109

PAINTED TINS AND BOX

Two typewriter ribbon tins with painted landscape scenes by Sister Cora Helena Sarle, summer with early house flying an American flag, 2 5/8" dia, and a winter scene with house in a snowy landscape with mountain backdrop, 2 1/4" dia, (sold WHA, 10-12-92, lot 137); and a paper covered rectangular box, with a watercolor blue floral bouquet painted on lid, 4" l, 3" d, stamped "GAM" on base (Dr. George A. Marks was a great New Hampshire friend and collector).

\$400-600



110

SISTER'S WORK STAND

Single board tiger maple rectangular top, 18 1/4" x 25 1/4", (note: slight bevel around rim underneath), single drawer below with three dovetails, classic cherry Canterbury dimpled drawer pull, elegant turned and tapered legs, with a medial circular scribe line, Canterbury, NH, c. 1840-1850, 26" h, (sold Doug Towle auction, 9-4-05, lot 305).

\$3,000-6,000



111

LIDDED PAIL

Pine, original ministry blue painted finish, (exceptional condition), wire bail handle with turned birch grip with red varnish stain, oval double riveted bail plates, circular lid with raised central section, metal rim double riveted with half circle ends, two metal hoops clasped in the same style, (tight as a drum), turned base dated in black script "1855", tag under lid "This pail belonged to Aunt Lucy Andrews - I knew it in the 1885 year", also signed in pencil inside "This pail was a wedding gift to Lucy Welch Andrews in the year 1885", (sold WHA, 8-2-87, lot 27, and also 6-28-03, lot 27), certainly one of the finest pails in very fine condition, 7 1/2" h (to rim), 9 1/2" dia (at top).

\$1,000-2,000



112

TWO SISTER'S OVAL SEWING CARRIERS

Pine and maple, natural varnish finish, swing handles, four fingers, small carrier with red silk, fitted with tomato pincushion, wax, strawberry emery, felt needlecase, 3 1/4" h, 9 1/4" l; large carrier tied with light brown silk, interior with tomato pincushion, 3 3/4" h, 11" l; both made by Brother Delmar Wilson, Sabbathday Lake, ME.

\$600-800



113

ADD-ON SISTER'S SEWING CABINET

Bird's-eye maple, cherry and pine, turned walnut pulls, double hinged lid with storage for yarns and knitting supplies, three finely dovetailed and lipped drawers, bird's-eye maple veneered strips in front, (small piece missing lower left), exceptional construction and choice of woods, c. 1860, (sold WHA, 11-19-00, lot 1001), 15 1/4" h, 16 3/4" w, 10 1/4" d.

\$1,500-3,000



114

APPLE TRAY

Cherry and poplar, original natural finish, canted and dovetailed sides, single bottom board, symmetrically nailed to sides, curved ends, c. 1850, 4 3/4" h, 19 1/4" l, 11 1/2" w.

\$400-600



115

SISTER'S TRIPOD SEWING STAND

Birch single board top with shaped corners, over two underslung sliding drawers, with Shaker turned and threaded walnut pulls, turned maple shaft with three inset cherry wood legs, overall good condition, (note: two Sister's could sit across from each other and the drawers would slide each way, exceptional and rare design), Hancock, MA, c. 1840-1860, (sold WHA, 9-6-14, lot 60), 23" h, 19 1/2" w, 19 1/4" d.

\$5,000-7,000



116

CHILD'S ROCKING CHAIR

Maple, original dark walnut stained finish, acorn finials, three shaped slats, early taped woven stripe seat in dark and light browns, with taped on history inside left stile "Shaker child's rocker #1...Bought from Sister Jennie Wells at West Pittsfield, Mass, 1947.", stamped "1" on back of top slat, and trademark decal inside right rocker, Mt. Lebanon, NY, c. 1880, (sold WHA, 10-14-07, lot 93), 12" seat h, 28 3/4" overall h. \$1,000-1,500



117

RARE CHILD'S NEEDLEWORK SHAKER SAMPLER

"Jesse Patte (Patten), Remember me, when this you see, For it is from one, that loves the (Thee)", lightly sewn to a cloth covered backing, blue cross stitch on white background, tiny border surround, 2 3/4" x 3 5/8", (ex. Richard Schneider). \$1,000-1,500



118

CHILD'S NEEDLEWORK SAMPLER

Blue thread needleworked on white muslin, single alphabet in capital letters and numbers 1 through 9, dated "1826 1827", (note: Shaker samplers are rare - this one was sold by WHA, 10-10-04, lot 52), 3 3/4" x 7" (sight), in a much later silver painted frame, 4" x 7 3/4". \$1,000-1,500



118A

VERY RARE NEEDLEWORK SHAKER SAMPLER

Brown and blue alphabet, "Sally Greenfield her sampler Hancock September 24, 1809" and blue numbers 1 through 10; and "Polly E. Cranston", "Eight Sand Yers", "1811, Enfield, C. ABC.", 7 1/2" h, 7 3/4" w. [Note; Two young girls, one at Hancock, and one at Enfield worked on the same line in background, very early in Shaker history.] \$1,500-2,000



119

STOVE BELLOWS

Pine, shaped tin nozzle, original blue painted finish, symmetrically nailed, with lozenge shaped wood strips reinforcing the handles, exceptional design, leather portion has deteriorated, New Lebanon, NY, c. 1830-1840, (sold WHA, 9-22-91, lot 62), 28" l, 5 1/2" w. \$500-700



120

STORAGE CABINET

Poplar, brown stained finish, hinged lift lid opening to a deep storage well on left side with sliding breadboard work surface, rectangular till on right, with two exterior drawers, on slightly curved cut out base, three inset panel back and double inset panel sides, 32" h, 40 1/4" w, 19" d.
\$2,000-3,000



121

THREE STACKED OVAL BOXES

Maple and pine, original light red/brown stain, interior clipped newspaper "Vol. III - No. 8, Shaker and Shakeress, Mt. Lebanon, NY Aug 1873" to fit the bottom, lid cracked on left rim, 3 3/8" h, 9 1/8" l; Original dark brown stain finish, four fingers, 4" h, 10 1/8" l; Maple and pine, original putty yellow painted finish, four long shaped fingers right to left, interior with green paper covered bottom, c. 1840, 4" h, 12 3/8" l. [Note: from an early collection of the late James H. Bissland, Jr., who primarily bought from the North Family Shakers, New Lebanon, NY, in the 1950's.]
\$1,500-3,000



122

SMALL EARLY OVAL BOX

Maple and pine, original brown stained finish, three small carved fingers left to right, small old nick on lid with patina, found in New Hampshire, c. 1820-1830, 1 1/4" h, 3 5/8" l.
\$600-900



123

SHAKER WHISK BROOM

Maple handle, with twine for hanging on peg, 15" l, pictured on page 116 *Hands to Work: Shaker Folk Art & Industries*, by Marian Klamkin, (ex. Belfit collection).
\$400-600



124

BONNETS, NEEDLECASE, BASKET, TOOL

Two poplar doll bonnets; Woven poplar needlecase, with multicolor felt interior and Victorian pins; Rare, hexagonal, woven poplar lidded fancy work basket, with tiny Shaker woven blue silk ribbon on lid, (some missing weavers), (sold WHA, 7-30-06, lot 53), 2 3/4" h, 5 3/4" dia; Walnut and brass hand tool, used for cutting straw or palm leaf into tiny weavable strips for bonnets, baskets and needlecases, 5" l, 1/2" w.
\$400-600



125

RARE TRESTLE FOOT SWINGING CHILD'S CRADLE

Poplar, original red stained finish, canted sides, triangular shaped ends, suspended from turned legs through vertical rounded side boards, that are through mortised into arched trestle feet, supporting rectangular rod below, (Kitty Haas collection), 24" h, 32" l, 14" w. [Note: A rare Shaker form for babies and children brought into the community from the outside world.]

\$500-700



126

FOUR SHAKER CLOTHES HANGERS

Maple and cherry, bentwood, original finish, two signed with labels "Amy Reed.", and "J. Neal", New Lebanon, NY, c. 1840-1850, (Kitty Haas collection), 13" to 15" l.

\$300-500



127

SISTER'S SEWING CASE

Walnut, original natural varnish finish, fitted and dovetailed interior case, with five lidded compartments with inset dark stained diamonds, and turned bone pulls, interior note "Made for Keziah Lyman", Enfield, CT, c. 1880, excellent craftsmanship, crack at front of hinged top, original key and inset diamond escutcheon in dark stained wood, (sold WHA, 10-10-04, lot 273), 6 3/4" h, 12" w, 8 3/4" d; 2 3/4" h, 11" w, 8" d (interior box).

\$700-900



128

SPOOL HOLDERS AND PINCUSHIONS

Maple, walnut and cherry, two tomato top cushions, each with turned base and steel pins for spools, 6" h, one stamped "Trademark - Shaker Goods, Alfred, Me." on base, two double tiered velvet cushions, spool holders, with threads, 7 1/2" h, and a walnut case with pincushion top, with interior steel pin spool holders, drawer below, 7 1/2" h, 6 3/4" w; (sold WHA, 11-19-00, lot 171).

\$500-750



129

SISTER'S SEWING CASE

Walnut and tiger maple, hinged lid with inset rectangular tiger maple panel, opening to a separate sectioned inset box, with five open compartments, interior mirror in lid, dovetailed drawer below with tiger maple veneered front, turned pull, (note: used as a jewelry case by the consignor), overall good condition, c. 1890-1920, possibly Sabbathday Lake, ME or Enfield, CT, 7 1/2" h, 11 3/4" w, 8 1/4" w.

\$500-750



130

SISTER'S SEWING TABLE

Pine and maple, original dark varnish red stained finish, underhung full-length drawer with walnut turned pull, splayed legs with octagonal stretchers on brass castors, reportedly from Union Village Ohio Shaker community, once owned by Clark Garrett, famous Fairhaven, Ohio dealer, (sold WHA, 7-13-19, lot 125), 25" h, 20 3/4" w (at top), 13" d.
\$2,000-4,000



131

LARGE OVAL BOX

Pine and maple, original varnish finish, five fingers, copper tacks and tiny brads, excellent condition, slight crackled varnish on lid, c. 1840-1860, 5 1/2" h, 13 1/4" l.
\$1,500-2,000



132

EXCEPTIONAL SHAKER DRESSED DOLL

Porcelain, marked with numbers and "Germany" on back of neck, hazel eyes, open mouth, blonde hair, Shaker net hair bonnet and woven palm leaf bonnet with red polkadot lining, with brown silk ribbon and cowl, light brown pleated dress, pantaloons and white cotton underliner, New Lebanon, NY, c. 1900, 16" h.
\$500-700



133

TWO VERY FINE SHAKER DRESSED SISTER DOLLS

Porcelain, marked "Germany" on back of neck, brown hair and eyes, woven poplar bonnet with light green silk, light green finely woven wool dress, pleated, bertha with fancy trim, kid leather body, appropriate undergarments, 14" h; Porcelain with brown hair and eyes, marked "Germany", pink cotton pleated dress, appropriate undergarments and buckled shoes, (sold WHA, 10-14-07, lot 3), 12 1/2" h.
\$500-700



134

DRAWERS OVER CUPBOARD

Pine and poplar, yellow painted finish, six dovetailed drawers, over a plank door with two-shelf interior, two walnut turned pulls on each drawer, with porcelain and cast steel door closure, appears to have been built-in on right side, 66 1/2" h, 19" w, 16 1/2" d.
\$1,000-2,000



135

CHEESE PRESS

Maple, original red painted finish, rectangular posts supporting a heavy block above, with a central large wood turnscrew to press the liquid from the curds, rectangular red painted pine box, carved base with an open trough for the runoff, c. 1840-1850, (Kitty Haas collection), 32" h, 29" l, 18" w.
\$600-900



136

CHEESE LADDER AND CHEESE CONTAINER

Oak and fruitwood, through mortised and pegged, 23" l, 9 1/2" w; Chestnut and pine cheese pail, three interwoven laps, and a nailed top finger lap, c. 1850, 8" h, 15 1/2" dia; (Kitty Haas collection).
\$400-600



137

CHEESE BASKET

Black ash splint and maple, round double wrapped rim, hexagonal base, c. 1840-1850, 5 1/2" h, 26" dia.
\$400-600



138

CHOP BOWL, SMALL DIPPER, SHAKER BUTTER MARKER

Maple, natural finish and patina, finely turned with slight raised base, (small 2" crack at one edge of rim), in-use chopping marks, 3 3/4" h, 14 1/2" dia;
Cooking/measure dipper, maple, natural finish, (sold WHA, 10-10-04, lot 71), 1 3/4" h, 2 5/8" dia, 6 3/4" l;
Rare cased butter stamp, carved "S" (Shaker), finely turned handle, (sold WHA, 7-30-06, lot 21), 5" l, 2 3/4" dia.
\$400-600



139

LIDDED PANTRY BOX

Maple and poplar, lid lapped and nailed, inside written in ink a recipe for "Shaker Apple pancakes, Canterbury Shakers", swing handle with heavy wire bail and turned birch wood grip, diamond shaped steel bail plates, nailed lap body, typed sheet provenance: "...from Mary Carson,...who bought them at the Watervliet sale", 5 3/8" h, 10 1/2" dia.
\$400-600



140

RARE SISTER'S SEWING DESK

Pine and maple, original dark red painted finish, separate top section with four drawers for sewing objects, bottom stand with applied raised gallery and a full-length side drawer, side stretchers on tapered and turned legs, 38 1/2" h (to top), 26 1/4" h (to work surface), 26 1/2" w, 22 1/2" d, top is 11" d.
\$8,000-12,000



141

TWO 19TH C. SHAKER SEED BOXES, AND TINS

Pine, sectioned interiors for Shaker produced seed packets, yellow label "Shakers Choice Vegetable Seeds, Shaker Seed Co. D.M. Mount Lebanon N.Y.", with names of vegetables on top of front rim, (Beet, Beans, Corn, Cucumber, Carrot, Parsnip, etc.), sans lids, 4 1/2" h, 22" w, 9 1/2" d; along with ten 20th c. labeled herb tins from Sabbathday Lake Shakers, (Peppermint, Camomile, Blackberry root, Comfrey, etc.), 2 1/2" h, 2 3/4" dia.
\$1,000-1,500



142

STORAGE PAIL

Pine, original red painted finish, circular lid with long finger closure affixed with symmetrically lined tacks, slat body with interwoven hoop closures, overall good condition, (note: a very fine small barrel with lid, from the Kitty Haas collection), 14" h, 14 1/2" dia (at lid).
\$600-900



143

SEED SPREADER

Pine and tin, original dark cranberry red painted finish, iron/wood handled crank, cloth strap (diamond shaped steel plates hold the strap), c. 1870, "Shakers saved time and seed with a 10-foot wooden seeder...hung from sower's neck...balanced in front with curved iron waist band. As he walked, the sower moved the lever...forcing the seeds through holes in the tin strip on the bottom..." June Sprigg, page 42, *By Shaker Hands*, A.A. Knopf, Inc., 1975; 4" h, 10' 2" l, 4" d, (ex. Doug Towle, 9-4-05, lot 89A).
\$600-900



144

BERRY PAIL

Pine, original raspberry red painted finish, creamy yellow interior, with white underneath, wire bail handle with turned birch grip, black painted diamond bail plates, two black painted bands, c. 1840-1850, very fine condition, minor in-use wear on inside, 4 1/2" h, 5 1/2" dia.
\$500-700



145

WORK COUNTER

Maple and pine, original red painted finish with a scrubbed top, four tongue and groove board top affixed to the case with large handmade screws, over four full-length lipped drawers, dovetailed, original pulls are later replaced with half spools painted red, over two and two full-length drawers, baseboard shows Sister's use of wet mop cleaning, sides of case are dovetailed, (Tim Rieman describes this technique in *The Encyclopedia of Shaker Furniture*), Tyringham, MA, c. 1830, 30" h, 77 1/2" w, 33 1/2" d.
\$3,000-5,000



146

SHAKER TINSMITH PIECES

Rectangular warming pan, attached handle, on top tagged "Made at the Canterbury N.H. Shaker Colony, Roll warmer fits over early Shaker stove, Purchased from the Shakers here", 3 1/2" h, 12 3/4" l, 7" d; Sausage stuffer, with maple plunger, 14" l; Oil lamp filler, shaped spout and side handle, 7 1/2" h; Dust pan, with copper ring for hanging on peg, 12" h, 11 1/4" w; (Kitty Haas collection).
\$300-600



147

DECALS AND FOOTSTOOL

Uncut sheet of 12 Mt. Lebanon decals for production chairs, #0, #1 and #3, 6 1/2" x 8 1/4" sight; Mt. Lebanon production footstool, original black painted finish, with a decal trademark underneath, 6 3/4" h, 11 1/2" sq top.
\$300-600



148

THREE FRAMED ADVERTISING SILK BOOKMARKS

Two gray/black and one rose/red, fringed, 3" x 8", "E.J. Neale & Co, Mt. Lebanon, N.Y., Shaker Cloak", 16 1/2" x 23 1/2" (frame).
\$300-600



149

SIX WOODEN OBJECTS

Maple donut cutter, 4 1/2"; Two Sister's darning mushroom shaped work, one in chrome yellow; Maple darning ball in a box; Small turned sander, 2" h; Finely turned maple handled cone and ball children's toy, 10" l.
\$300-600



150

BLANKET CHEST

Pine, original red stain, excellent condition, hinged one board top, dated in pencil "April 12, 1827" under lid on right, molded edge, three-section till, dovetailed case, tall dovetailed base in front, nailed back, (left back foot reinforced, no key latch is connected to front lock), Watervliet or New Lebanon, NY, 23 3/4" h, 42" w, 18" d.

\$2,000-4,000



151

SIFTER, WOODEN PEGS, DISH, SPLINT CUTTER

Small, Shaker silk and maple herb sifter, copper tacked, single finger on base, 1 1/4" h, 4" dia; Rectangular pine open top box with slanted sides, filled with thousands of small wood carpenter's and shoemaker's pegs, 4" h, 6" w, 5" d; "Syracuse China" ashtray, with image of a Shaker Sister in blue, 4" dia; Cherry and brass splint cutter, marked "#12", 5 1/4" l.

\$300-600



152

COLLECTION OF RARE MINIATURE BASKETS

Hoop handle with double wrap rim, 1 1/2" h, 3" dia; Inverted bottom, double wrap rim, old patina, 2" h, 3 1/4" dia; Very small basket with tall hoop handle, single wrap rim, 1 1/8" h, 1 3/4" dia; Pair of very fine round baskets, with openwork bottoms, edged in kid leather, lidded, attached with silk, 1" h, 2" dia; Rectangular basket, 1" h, 5" l; Oval double wrap rim, with open weave bottom, old patina, 1 1/2" h, 5 1/4" l; Doll's basket, hoop handle and variegated weavery, 1/4" h, in a cardboard box.

\$400-800



153

HOOP HANDLE BASKET

Round top, single wrap rim, square open weave bottom, initialed "AA", tagged "Canterbury Shaker, ex. Stokes collection", signed for "Abigail Appleton" of Canterbury, c. 1870, 6" h, 9 1/2" dia.

\$300-600



154

TWO BASKET MOLDS

Pine, cone shaped, with nailed slats, round pine boards on top and bottom, rope loop handles, 12" and 10" h, 11" and 9" dia at top.

\$400-700



155

DROP LEAF WORK TABLE

Pine, traces of original red stained finish on base, 7" drop leaves with pull out supports, double pegged skirt, two drawers (one on each end) hung off the skirt, turned tapered legs, on cuffs pegged into raised arched runners, (possibly had castors at one time), c. 1860-1870, (Kitty Haas collection), 29" h, 29 3/4" l, 26 1/2" w.

\$1,000-2,000



156

TRIPLE HANGER

Pine, original dark patina, three shaped bars with rounded edges, attached to the flat vertical bar with four copper tacks and a central screw, two holes for hanging on pegs to facilitate length of garment, c. 1830, (note: tagged lot 255, Kitty purchased the "Unusual three-part clothes hanger (HD)", Harvard, it sold for \$15.00 at the landmark Jordan Auction in 1968), (Kitty Haas collection), 15" l, 14" w.

\$600-900



157

BROTHER'S COTTON WORK FROCK

Yoke at chest, double buttoned collar, gathered full sleeves, buttoned at the waist, initialed in red "F B" on right at the open seams, 32" l. [Note: found in New York so very likely Watervliet or New Lebanon, NY. Quite rare to find in great condition.]

\$300-600



158

SHAKER DRESS AND NECKERCHIEF

Cotton, dyed dark wine purple, long sleeves with three black buttons on the cuffs, double row of black round buttons down the front (one button missing), five pleats on each side of central apron, gathered at the waist, Canterbury, NH, c. 1870, 43" l, 11" at waist; along with a black silk neckerchief (two small tears), (see p. 168, fig. 92 *Shaker Textile Arts*, Beverly Gordon, 1980).

\$300-600



159

FOUR SHAKER HANGERS

Maple, fruitwood and birch, two are inscribed with Shaker's initials, "EB" and "TN", c. 1850, 14" to 17" l. \$400-700



160

SHAKER DINING TABLE

Pine, two board top, early scrubbed finish, cleats underneath fix the top to the skirt and legs, skirt is thumbnail molded at the bottom, heavy birch legs, double pegged into skirt, square to turned, Shaker hand forged wrought iron "L" braces at each end, 29" h, 11' 11" l, 26 1/4" d.
\$3,000-5,000



161

CUTLERY CARRIER AND ROLLING PIN

Tiger maple, turned birch handle, attached to central partition, canted sides dovetailed into gently rounded ends, (note: central partition is double through mortised into the ends), good condition, 3" h, 13" l; Tiger maple rolling pin, small turned knob ends, 22" l. [Note: Excellent examples of Shaker craftsmanship in everyday used objects, and in tiger maple.]
\$400-700



162

HOT PLATE MAT, CORK SETTER, AND ROLLING PIN

Oval variegated strips, held together with felt (replaced), Enfield, CT, c. 1880-1900, 12" l, 9" w; Rare wood tool for placing corks in Shaker medicine and herbal extract bottles, two handles with hand carved serrated notches for gripping two sizes of cork, fastened with nailed canvas, 10" l; Heavy dark wood rolling pin, with finely turned knob ends, 14 1/2" l.
\$300-500



163

FOUR MINIATURE CHEESE STYLE BASKETS

Small black ash splint, openwork design, round tops, hexagonal bottoms, all are in good condition with a few minor breaks, 1 3/4" to 3" h. [Note: The Shakers made these fancywork small baskets for many purposes. Usually as inserts into other larger sewing baskets to hold thimbles and other small sewing objects.]
\$300-500



164

SISTER'S SEWING STEPS

Yellow pine, traces of original varnished red stained finish, 5" w tread top board over the 9" inset bottom step, high arched sides, Watervliet or New Lebanon, NY, c. 1840-1860, good condition, with nail holes on back edge showing a possible later covering now removed, 10" h, 14 1/4" w, 9" d. [Note: Shaker Sister's used steps like these to elevate their feet as they worked, and also to reach up to tall cupboards and chests of drawers. *Inspired Innovations*, M. Stephen Miller, p. 122.]
\$300-500



165

WORK STAND

Pine, original dark red painted finish, applied raised edge, single board top, (note: possibly used in a barn to sort seeds), large single drawer with original carved maple pull, plank sides with high arch extending to feet, found in Maine (Alfred or Sabbathday Lake), c. 1860, 22" h, 24" w, 16 1/2" d.
\$800-1,200



166

SHAKER TABLE TOP BUTTER WORKER

Fruitwood and maple, original varnish finish, triangular shaped with a swinging wood double blade for smoothing, drainage hole in large end, counter sunk screw construction, very finely made, (possibly missing a top handle, but still very usable), (Kitty Haas collection), 7 1/2", 25" overall l (from handle).
\$400-600



167

TWO NEW HAMPSHIRE TILT CHAIRS

Birch and maple, original red stained finish, with an early (possibly original) Shaker woven taped seat in reds, gray and green, wonderful patina and color, 15" seat h, 41" overall h; Birch and maple, old refinish, mid 20th c. taped seat, fine condition, 16 1/2" seat h, 41" overall h, (sold WHA, 10-3-09, lot 69; Canterbury, NH, c. 1830-1840.
\$600-900



168

TABLE TOP APPLE PEELER

Pine and maple, pegged construction, swivel arm with adjustable steel blade, prong fork to hold apple, extending to a finely turned handle, large carved clamp below to attach to a bench or table top, c. 1840-1850, (exceptional Shaker ingenuity and craftsmanship), 16" h, 9" l, 6 1/2" w.
\$300-500



169

APPLE SORTING TRAY

Walnut and pine, original finish with patina, rectangular form, canted sides and dovetailed, beveled edge, symmetrically nailed bottom board, c. 1850, 3" h, 15 3/4" l, 8 1/2" d.
\$300-500



170

CHEST OF DRAWERS

Butternut and poplar, single board top, seven dovetailed drawers, with turned and threaded pulls, and each with a lock, two vertical board paneled, back with a medial board central connector, 52" h, 32" w, 15 3/4" d.

\$2,000-4,000



171

THREE FRAMED SHAKER EPHEMERA PIECES

Colored A.J. White advertising cards "Shaker Extract of Roots, Siegel's Syrup, Shaker Family Pills and Shaker Soothing Plasters", oak frame, 11" x 13"; Black and white printed label "Superfine flour of Slippery Elm,...D.J. Hawkins, New Lebanon, N.Y.", 5 1/4" x 3 1/4"; "The Shaker Vegetable Remedy for Sick Headache, Constipation, Torpid Liver, etc....", 8" x 5" (sight).

\$300-500



172

YARN WINDER

Pine and maple, original red/brown stained finish, used for winding yarn into skeins, four slat arms, mortised and pegged into slightly curved yarn holders at each end, peg for turning wheel, lollipop top sliding board for access to gears, all pegged into a rectangular baseboard with four carved and canted feet, (Kitty Haas collection), 37 1/2" h, 29 1/2" w.

\$400-600



173

FLAT BROOM

Metal holder for broom corn fibers, tall turned pine handle, original varnish finish, clip at top for hanging on peg, (sold WHA, 9-4-05, lot 358), good condition, 54" h. [Note: Invented by Brother Theodore Bates of Watervliet, NY in the first half of the 19th century.]

\$300-600



174

STACK OF FIVE SHAKER BOXES

Birch, maple and pine, variable shades of original red paint and stain, bottom box is labeled inside "Rosetta Cummings", Enfield, N.H., (note: the consignors great-grandmother was a very good friend of Sister Cummings and other Enfield Sisters), five finger construction, 4 1/4" h, 11 1/4" l; Four finger box, 3 3/4" h, 9 1/8" l; Four finger box, very good orange/red stain, 3 1/4" h, 8 1/8" l; Three finger box, (lid possibly from another box, some interior stains, otherwise good), 2 1/2" h, 2 5/8" l; Top box, three fingers, overall good with a few interior stains, 2 1/8" h, 5 1/4" l.

\$4,000-7,000



175

CANDLESTAND

Birch, traces of original red stain with varnish over, round top (18" dia), carved and turned shaft, pegged into a rectangular cleat, with symmetrically aligned handmade screws, high arched tripod base with small pad feet, early leg double pegged into shaft, (Kitty Haas collection), 25" h.
\$2,000-3,000



176

YARN SWIFT AND BRUSH

Maple, original yellow stained finish, adjustable tension with screw clamp, attached "C" clamp with thumbscrew for table top use, turned cup on top for yarn, (note: 19th c. made and sold at Hancock, MA), 21" h; Brush, maple handle finely turned, scribe marks at midpoint, original red stained finish, gray horsehair brush, 13" l.
\$300-600



177

TWO TILT CHAIRS

Birch and tiger birch, original dark red stain with varnish, three slats graduated upwards, very early green taped seat, over ticking filled with horsehair or sawdust, original tilters, Alfred, ME, excellent condition, 15" seat h, 40 3/4" overall h; Birch, light varnish over light red stain, three graduated slats, early rush seat, original tilters, Enfield, NH, good condition, 15 1/2" seat h, 41" overall h.
\$700-1,000



178

OVAL BOX

Pine and maple, original gray painted finish, three fingers, very finely formed and clasped with small copper tacks, c. 1830, 2" h, 6 3/8" l.
\$500-800



179

TWO OVAL BOXES

Pine and maple, natural original finish, three fingers (offset to the right), small copper tacks, tiny wood pegs holding top and bottom, good condition, small crack at top finger, 2 1/4" h, 5 1/4" l; Pine and maple, four fingers, traces of original red finish, overall good condition, light in-use wear, (note: paper saying it was from a barn in Watervliet, NY), 4" h, 10 1/4" l.
\$800-1,200



180

SHAKER TALL CHEST

Pine, original yellow stain finish, originally built-in, free standing, original finely turned cherry pulls, eight drawers, finely dovetailed and lipped, one spaced for a divider, as these were used by two Shakers, c. 1840, (sold WHA, 10-14-07, lot 200), 6' 10" h, 33" w, 21 1/4" d.
\$2,000-5,000



181

TWO MEASURING STICKS

Yardstick with hand stamped numerals, and lined with quarter inches, maple, original varnish finish, and a finely shaped cut out for hanging on a peg; Double edged yardstick, with hand stamped numerals right and left, dated "1851" and initialed "J.A.T.", maple, original varnish. [Note: One of the first challenges a young Shaker apprentice carpenter would make.]
\$400-600



182

BABY MITTENS

White spun wool, tied with light purple silk ribbon, and knotted with a bow, card with history "Knit by Eldress Emma B. King, March 1960", (sold WHA, 10-12-92, lot 137), 3 1/2" l.
\$200-400



183

COLLECTION OF SHAKER MINIATURE FURNITURE

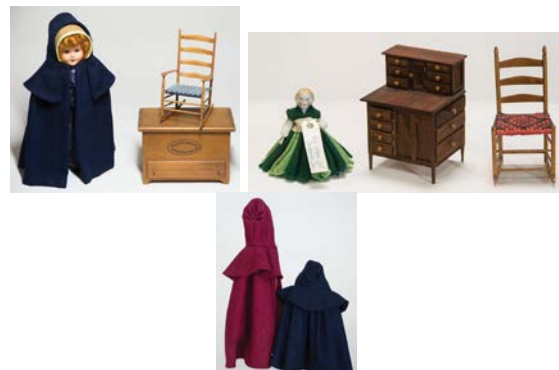
Includes approximately 25 pieces made by Gus and Alice Schwerdtfeger of Maine: Mt. Lebanon taped rockers, pine chests, tables, wood box with wood, stove brush and dust pan, mirror and holder, trestle footed towel rack with hand towels, braided rug (possibly made by June Sprigg), bowl, firkin, peg board, etc., c. 1960's, (sold WHA, 9-6-14, lot 247).
\$400-600



184

SHAKER DRESSED DOLL, CLOAKS, MINIATURE BLANKET CHEST, ETC.

Doll with navy blue pleated dress, bertha with three blue buttons, navy blue cape, and poplarware bonnet; Miniature one-drawer blanket chest; Four-slat armed rocker with blue and white taped seat; Penwiper doll, marked on tag "Sabbath Day"; Miniature Sister's sewing desk, with workable drawers in walnut stain; Rocking chair with taped seat in the "Wilkins Weave" design; Two cloaks, one navy blue, one cranberry red.
\$400-600



185

BROOM VISE

Pine and maple, original finish, exceptional construction, mortise and pinned, heavy base and legs, holds broom corn to be tied onto a handle, c. 1840, (sold WHA, 10-14-07, lot 380), 54" h (to top of handle), 29 1/2" l, 12 1/2" w.
\$500-700



186

SHAKER SEWING PIECES

Rectangular sewing carrier, with maple swing handle, dovetailed, with attached pincushion and needle book, 10 1/4" l, 7 1/2" w; Fitted octagonal poplarware sewing box, pink lined, Canterbury, NH, and a pink pincushion; Polkadot cushion and needle book; Maple spool holder, green tomato cushion with wax and strawberry emery, 6 1/2" h.
\$400-600



187

FOUR ROUND MEASURES

Maple and pine, copper tack seams, on with maple and walnut alternating slats, walnut base, Enfield, CT, 3" h, 4 1/4" dia; Two small round measures, 2 1/4" and 1 3/4" h; Larger coopered measure, 2 3/4" h, 6 1/2" dia.
\$300-500



188

CUTLERY CARRIER AND ROLLING PIN

Bird's-eye maple and oak, rectangular form with canted sides, single piece carved oak divider forming the handle, symmetrically nailed baseboard, 5" h, 14 1/2" l; Thin maple rolling pin, with finely turned handles, 21" l.
\$300-500



189

SISTER'S BENCH

Pine top, cherry legs, original clear varnish finish, signed under top in chalk "Canterbury", and a Shaker printed green label "Leah Taylor.", also tagged with a postcard note from June Sprigg to "Gerry" [McCue], saying that Sister Taylor was an Eldress at North Family from 1854 to 1923, (note: great provenance), 10" h, 30" l, (ex. J.J. Gerald McCue collection).
\$400-800



190

INFIRMARY BED (COT)

Pine and maple, original green/blue painted finish, shaped Shaker headboard fastened to rails with handmade screws, heavy cotton canvas nailed to rails (5' 5" l), "59" in ink on canvas near headboard, (modern pillow and mattress), four turned and carved legs (unpainted), with original pegged wheels, 24 1/2" h (to top of backboard), 27" w, 15" h (to canvas).
\$1,200-1,800



191

COLLECTION OF SHAKER REFERENCE BOOKS AND PHOTO ALBUMS

Nine large binders of photographs taken by Ginny and Vernon Squire on their many trips to Shaker Villages spanning over 30 years, including notes from the Shaker Seminars; also many Shaker reference books, magazines and pamphlets.
\$500-700



192

SHAKER WOODEN OBJECTS

Pair of stocking stretchers, poplar, original finish, (purchased at the Jordan Shaker Auction, 9-27-68, lot 73), "C" (Canterbury, NH Shakers), 18" l; Sister's maple hoop, possibly used as an embroidery hoop, (sold at the Jordan Auction, 9-27-68, lot 528, for \$5), 12" d; Hand carved wooden clothespin, maple, original finish, (Jordan Auction, 9-27-68, lot 552), 5" l; Hand numbered maple rule, 18" l, in original varnish, numbered on both sides; (Kitty Haas collection).
\$300-500



193

STORAGE BOX

Pine, original dark green/black painted finish, hinged lid, intact lock, dovetailed case, applied molded baseboard, in-use wear around bottom front edge, Watervliet or New Lebanon, NY, c. 1850, (note: possibly used for the storage of Sister's bonnets), 17 1/2" h, 16" w, 14" d.
\$400-800



194

SHOVELS AND PITCHFORK

Large maple and tiger maple snow shovel, blade rimmed with sheet metal, carved from one piece, initialed "G.M.W.", c. 1840-1850, (sold WHA, 9-4-05 Doug Towle auction, lot 357), 44" l; Narrow bladed shovel, maple and tiger maple, carved from one piece, possibly for grains, 36" l, 8 1/2" w; Oak pitchfork, three tines, carved maple separators, long tapered handle, (sold WHA, 9-4-05 Doug Towle auction, lot 371), 59" l; (ex. John Broome collection).
\$300-500



195

BLANKET CHEST

Poplar, original blue painted finish, lift lid opening to deep well, over two graduated, dovetailed, full-length drawers, original turned and threaded hardwood capped mushroom pulls, half round footed base, c. 1840, (sold WHA, 10-14-07, lot 100), 42" h, 41 1/2" w, 17 1/2" d.
\$2,000-3,000



196

SISTER'S CARRIER, AND BOTTLES

Rectangular shape, double swing handle, very thin maple sides, assembled with round head brass tacks symmetrically aligned, thin poplar wood bottom, original dark stained varnish finish, 4 1/4" h, 18" l, 8 3/4" w; along with six herb and rose water bottles, from Sabbathday Lake, and "Summer Savory" tin with green/blue, New Lebanon label, (ex. Bissland collection).
\$400-600



197

TWO OVAL SEWING CARRIERS

Maple, original varnish finish, swing handle, "Sabbathday Lake Shaker" Trademark on bottom, fitted with needlebook, beeswax, strawberry emery and tomato pincushion, rosebud decorated fabric interior (mint unused condition), 2 1/2" h, 7" l.
\$500-700



198

TWO SPOOL HOLDERS

Red velvet tomato sewn top, turned cherry wood (6" h) base with five spools, three yellow, two signed "Hanna T.", and "B" paper label, 2 3/8" l; and a patterned brown silk cushion with turned base, with beeswax and strawberry emery, unusual shaft, three turned knobs, and two exceptional spools, chrome yellow, 1 1/8" l, and bright red with blue thread, 1 1/4" l.
\$1,000-2,000



199

FIVE SHAKER WOODEN OBJECTS

Template for a hay press, pine, rectangular board with hole for peg; Template for a Shaker rocker, pine with peg hole; Shaker bootjack; "T"-square for carpentry work and a square, the two pieces are pegged together at the joint, (peg board not included). [Note: from the Bissland collection, and most were purchased from the North Family, New Lebanon, NY, in the 1950's.]
\$400-800



200

STORAGE CUPBOARD

Pine, early brown stained varnish finish, two door front, each with two raised vertical panels, pinned through mortise, carved door closures, six-shelf interior, two vertical board back, c. 1840-1850, originally a "built-in", (Kitty Haas collection), 78" h, 30 1/2" w, 14 1/4" d.
\$1,500-2,500



201

HANGING TOWEL RACKS

Two Shaker cherry wood towel racks, each with three turned, pivoting arms and brackets for attaching to a wall or peg board, (sold at the Jordan Auction, 9-27-68, lot 557), "C" (Canterbury, NH), (Kitty Haas collection), 15 1/2" l, 13 1/4" l
\$200-400



202

DOMED TOP STORAGE BOX

Pine, original red stained finish, lined with blue paper, dovetailed, cast iron carrying handles on each side, lock and key, tagged "Shaker chest - Trunk (wood) from my room" (Gladys Jordan), (sold at the Jordan Auction, 9-27-68, lot 339), "C" (Canterbury, NH), (Kitty Haas collection), 10 1/2" h, 24" l, 13" d.
\$400-600



203

COMMUNITY ROCKING CHAIR

Birch, original red stained finish, three graduated slats, rush seat, inset and pegged rockers, tall finials, c. 1830 (pre-production), good condition, (sold at the Jordan Auction, 9-27-68, lot 228 as "3 slat rush seat rocker"), (Kitty Haas collection), 15" seat h, 38" overall h.
\$400-600



204

SIX SHAKER POPLARWARE SHOP ITEMS

Sabbathday Lake, ME, half round kid trimmed jewelry box, with red velvet interior, pink ribbons, 2" h, 8" l, 5" d; Canterbury, NH, box with pink cloth lined interior, rose decorated paper bottom, kid trimmed, 2" h, 4" w; Pink silk tomato pincushion, with emery and wax, 2" d; Canterbury, NH, three velvet pincushion topped poplar sewing pieces, pink, purple and blue velvet, 1 3/4" dia; (all in excellent condition).
\$300-500



205

SISTER'S SEWING DESK

Pine, traces of original red stain, good old patina, two small drawers in top section above a work surface well, three full graduated drawers on right side, thumbnail molded lips, dovetailed, second drawer with lock with diamond escutcheon plate, carved foot front section with pull-out sliding work surface, Canterbury, NH, c. 1840, 32 1/2" h, 22 1/2" w, 18 1/2" d.
\$3,000-6,000



206

TWO SHAKER MADE FANCY GOODS

Woven storage basketry box, ash, single wrapped lid, overall fine condition, bowed sides, extremely thin weavers, 2 3/4" h, 4" sq; Exceptional leather covered sewing box, leather wrapped with brown silk ribbon ties, pink silk interior with pocket for sewing utensils, embroidered needle leaves, interior box for thread and spool holder, excellent condition, fitted in a cardboard box, 2 1/2" h, 4" l.
\$400-600



207

FIVE WEAVING SHUTTLES

Maple, natural finish, carved open tops and forked bottom, (the Bissland collection, purchased from North Family, New Lebanon, NY), c. 1840-1850, 22 1/2" l.
\$300-500



208

BLANKET CHEST

Pine, original deep red painted finish, six board style, thumbnail molded lid, intact lock and plate, lid missing interior side cleats and till lid, tall arched bootjack base, c. 1820, possibly Harvard or Shirley, MA Shaker made, (purchased by the consignor from Pat Hatch in the 1980's), 25" h, 47" w, 18" d.
\$1,000-1,500



209

TABLE TOP SPINDLE WINDER

Pine open top box, two large wheels with turning handle, pegged, metal spindle for spun wool, New Lebanon, NY, c. 1850, 12" h, 26" l, 12" w.
\$400-600



210

SISTER'S FOLDING SEWING TABLE

Single board chestnut top, original brown stained varnish finish, hand numbered and inked yardstick on the top, (note: the Brother used a shadow effect for the numbers), a half round cutout for a Sister's easy access to the table, breadboarded ends, thin tapered oak legs, with hook and eyes for sturdiness, completely folds to three inches, c. 1880, 25" h, 36" w, 22" d.

\$400-600



211

SHAKER TOWELS AND BAGS

Cotton, initialed, "MM", "JF" and "NFE", purchased at the Jordan Shaker auction in 1968, lot 469, different sizes as laundry bags, handkerchiefs, hand towels, (Kitty Haas collection).

\$300-500



212

THREE SHAKER MADE BRUSHES

Cherry and maple, black horsehair, cloth bound tops, New Hampshire collector, 8", 9" and 9" l.

\$300-500



213

TWO SHAKER MADE DUST MOPS

Turned maple handles, in original black painted finish, dyed orange, yellow and beige wool mop heads, one marked "No. 4, Genuine Wool", sold in Shaker shops, 19" l.

\$200-400



214

TWO FINE SHAKER BRUSHES

Turned maple handle, one with exceptional turned handle, silver/white flat horsehair, 8" l; Turned maple handle, dark stain, purple velvet top with black horsehair, 9 1/2" l; sold in Fancy Goods Shaker shop.

\$300-500



215

SHAKER TRUNK

Pine, original cranberry red painted finish, six board style, hinged lid, with finely carved side cleats, Shaker made lock and clasp, original key and large metal diamond shaped escutcheon plate, interior papered with 1877 newspaper "The Shaker.", 14" h, 27 1/2" w, 15 1/2" d.
\$500-700



216

SPOOL HOLDER AND TOMATO CUSHION

Green velvet cushion, cherry turned shaft and base, original varnish finish, two spools, maple, in original painted red finishes with white silk and blue threads, strawberry emery, 6" h, 5 1/4" base dia.
\$400-600



217

RARE SMALL MIRROR AND HOLDER

Cherry and pine, original varnish finish, silvered glass, three brass tack buttons at bottom for brushes, shaped vertical back board with hole for peg, 17 1/2" h, 10 1/2" w; mirror - 11 1/2" h, 8 1/2" w.
\$1,000-1,500



218

SISTER'S SEWING CUSHIONS

Rare scallop shell pincushion, with red velvet interior and light brown silk ribbon, with certification of being made at "North Family or Gathering Order" at Sabbathday Lake Shaker community, signed Sister Frances Carr, and a tomato cushion made by Sister Eva May Libby, "it measures 3" across and still retains its original price tag of 50 ", also with a letter of certification from Sister Frances Carr of Sabbathday Lake, and other tomato cushions, poplarware pin leaf and pincushion, purple needlecase with silk signed "From Phoebe Wilcox", 9 pieces altogether.
\$500-700



219

LARGE COLLECTION OF SHAKER SEWING ITEMS

Including leather covered cloth sewing cases, 3" h, 6" l; Spool holder, signed W/"H", 6 1/2" l; Fancy case with bright yellow silk interior; Square pincushion with yellow velvet top and bottom, buttons, pins and crochet hooks; Sabbathday Lake poplar and velvet cushion, 1 1/2" h; Palm leaf edged red velvet cushion with pink silk ribbon bows; Octagonal sewing box with "Tapestry cloth" covering, with blue silk interior and filled with sewing items; "Dolly" penwipe, 2 1/2" h; 8 pieces altogether.
\$500-700



220

SIX DRAWER COUNTER

Pine and poplar, yellow wash, single board top with rounded corners, over two side-by-side sets of three graduated and dovetailed drawers, bottom left drawer with lock, c. 1850, 32" h, 63" l, 23 1/2" d.
\$2,000-4,000



221

TWO SILVER SPOONS

Tablespoon and teaspoon, both inscribed "Mt. Lebanon", and dated on back of handle "Oct. 6, '05", made by "Rogers & Bro A1", 8 and 6" l.
\$200-400



222

TWO TABLETOP SWIFTS

Rare large adjustable maple swift, with green, red and yellow slats, yellow cup at top, excellent condition, 23" h; Smaller yarn swift with adjustable slats, in original yellow stain, excellent condition, 18 1/2" h.
\$300-600



223

TRIPOD STAND

Tiger maple and maple, old refinish, rectangular top (13 1/2" x 15 3/4"), rectangular cleat screwed to top, octagonal carved shaft, carved legs pegged into shaft, (note: see *By Shaker Hands*, June Sprigg, Alfred A. Knopf, Inc., 1975, 1990, p. 105 for identical stand), 26 1/2" h.
\$800-1,200



224

DOUGH BOX

Pine, original red painted finish, lid with raised central handle, canted sides with handles on both ends, Watervliet or New Lebanon, NY, c. 1850, 13" h, 36" l, 18 1/4" w.
\$500-700



225

RARE INVALID'S ARMCHAIR

Maple, early varnish finish with patina, three slat back, curved arms, rush seat, fitted with a footrest and extra support bar bolted underneath, with casters, New Lebanon, NY, c. 1850, 15 3/4" seat h, 40" overall h.
\$500-700



226

COLLECTION OF 19TH C. HAND TOOLS

Gauges, planes, cutters, small clamp, poplar splint cutter with shaped handle, mushroom shaped darner, seven pieces, (from the collection of John McGuire, contemporary teacher and basket maker, and used in the making of splint baskets).
\$300-500



227

DINNER TRIANGLE

Wrought iron triangular shape, with exceptional curlicue shaped ends, would be struck with a mallet or small hammer to call Believers to a meal, 12 1/2" l, 12" w. [Note: A rare and wonderful 19th c. Shaker blacksmith made piece of hand wrought iron with shaped ends.]
\$300-500



228

COLLECTION OF GARDEN TOOLS

Includes two pitchforks, one with iron and one wooden; a rare double hand-numbered measuring stick, (extending 36" and 36"); wood tine rake; a hoe; wood shovel with tin wrapped top and shaped handle, (sold WHA); and a flail for thrashing grain, (flax), with a 1968 Jordan Auction tag, lot 71, "wooden flail", Canterbury, (Kitty Haas collection), 7 pieces, (peg board not included).
\$400-600



229

DOROTHY CLOAK

Wool, dark maroon in color, labeled "The Dorothy, Hart & Shepard, Shakers, E. Canterbury, N.H.", capelet is 11 1/2" l, unlined hood, missing silk ribbons, (consignor purchased from the estate of a wealthy Pittsburgh, PA businessman who died in 1919), 52" l.
\$500-700



230

WORK TABLE AND MEASURE

Pine and maple, old refinish with patina, two board top with breadboard ends, pegged and nailed, square tapered legs, large overhang, 28" h, 56" l, 37" w, (note: Mr. Helmut Lang was a collector of early american and Shaker antiques); along with an oak measure with reinforced metal rim at top, old patina, 7" h, 11" dia; (ex. Helmut Lang collection).
\$1,000-1,500



231

SHAKER STORAGE BOX

Pine, original red painted finish, leather hinged lid, shaped side cleats with original screws, original lock and diamond lock plate escutcheon, original key with early tag written in ink script, "Hardware Miscellany", cast iron side handles, molded baseboard, 12 3/4" h, 19 1/2" l, 13 1/4" d.
\$400-600



232

SIDE CHAIR WITH TILTERS

Maple, original dark red painted surface (patinated), elliptical finials with rounded tops, three slats with beveled top edges, early rush seat, early tilters tied with leather strips, Watervliet, NY, c. 1830-1840, (note: exceptional color), 15" seat h, 38" overall h, (ex. NH private collection; ex. Northeast Auctions 3/20/99).
\$400-600



233

BENCH

Pine, original dark green painted finish, plank top 1 1/2" thick, rounded corners, splayed and turned legs, fitted into rectangular cleats, at bottom of the plank, stretcher base, (one stretcher missing, possibly removed so a Shaker could sit and use it as a work surface), (Kitty Haas collection), 23 1/2" h, 47 1/4" l, 15" w.
\$500-700



234

MINIATURE FURNISHED SHAKER ROOM

Made by Gus and Alice Schwerdtfeger, 20th c., includes room lined with peg rails, chairs, trestle table, stove, wood box with wood, candleholders, hogscrape candles, mirror and holder, clock, bonnets and holder, candlestand, rocking chairs, carriers, measure, rugs, bed on wheels, etc., comes with custom plexiglass cover and base, 9" h, 28" l, 11" d; (ex. Scott DeWolfe).
\$700-1,000



235

CURD SINK

Pine, old finish, originally purchased from a private collector who purchased this piece from the Groveland, NY Shaker auction, c. 1900, (Groveland Community closed in the 1890's), cheese cloth was used and the curds would drain from the hole in the bottom, squared legs, 32 1/2" h, 38" w, 19 1/4" d, (ex. John McGuire and Chester Freeman).
\$600-900



236

SHAKER STORAGE BOX

Pine, original deep red painted finish, deep hinged lid, dovetailed lid and case, lock (missing hasp), from a Boston collection, 8" h, 28 1/2" w, 13 1/4" d.
\$400-600



237

OVAL BOX

Maple and pine, original red/orange painted finish, five fingers (including lid finger), signed under lid in pencil "From Olive Libby", (sold WHA, 6-30-84, lot 18), 4 1/4" h, 11 1/8" l. [Note: Sister Libby (1821-1892) was at Canterbury, NH, and the box was a gift to a Shaker at Alfred, ME. The floral decoration was by Fred Lord, a handyman at Alfred according to Sister Mildred Barker.]
\$800-1,200



238

TWO BAKED GOODS DRYING RACKS

Pine, one in original oranged painted finish, three rails on triangular end boards, square nailed dovetails, 6" h, 34" l; Larger rack with three rails, old brown stain (natural), missing corners, square nailed dovetails, plank ends, 4 1/2" h, 29 3/4" l.
\$200-400



239

SHAKER STORE CABINET

Butternut and poplar, original red stained finish, canted and dovetailed top, slanted hinged lid, dovetailed back section, three circular 4" and 5" windows cut into sides and back, full-length dovetailed drawer in the bottom of the back, small brass pull and lock, c. 1840-1850, (sold WHA, 6-28-03, lot 143), 23" h, 20" w, 14 1/4" d.
\$500-700



240

SHAKER ROPE BED AND BED WRENCH

Pine and maple, old refinish, through mortised and pinned into headboard, low turned square posts with round tops, terminating into large wheels so that the Sister could move bed easily for cleaning purposes, interwoven rope, traces of original green painted finish, 70" l, 40" w; Bed wrench for tightening rope, good condition; (Kitty Haas collection).
\$700-1,000



241

THREE SHAKER WOODEN OBJECTS

Pine, folding sweater stretcher, brass hinged, rounded edges, mortised with small brass screws, 13 1/2" h, 24" w (open); Maple niddy-noddy, mortised and pegged, finely carved, red stained patinated finish, 18 1/2" l; Shaker short hanger, walnut with brass cap and hook, exceptional carving, (note: possibly Harvard, MA, ex. Pat Hatch), 17" l, 15" w.
\$300-500



242

CHILD'S PRODUCTION ROCKING CHAIR

Maple, original dark walnut stained finish, acorn finials, three shaped slats, curvilinear arms with large mushroom caps, unusual paisley covered seat filled with sawdust, #0 Shaker Trademark on back of bottom slat, 9" seat h, 23" overall h.
\$700-1,000



243

TWO SISTER'S LAP BOARDS

Pine, original natural finish, both with breadboard ends, 35" and 37" l, 19 1/2" and 21" single board depth, both with half moon cutouts for sitting, sewing wheel marks are evident, c. 1850.
\$300-500



244

SHAKER DANCE PRINT

"Shakers near Lebanon", hand-colored, depicting Shaker Sister's and Brother's dancing at a Sunday meeting, with worldly woman sitting on a bench at lower left, framed and matted, 8 1/2" x 12 1/2" (sight), 18 1/4" x 21 1/4" (frame).
\$400-800



245

DROP LEAF WORK TABLE

Pine and maple, natural finish, one board top (17" w), two leaves (10" w), turned and tapered legs, finely carved just below the skirt, boxed leaf supports with pull-out leaf holders, top shows evidence of Sister's sewing wheels, (Kitty Haas collection), 29 1/4" h, 42" w.

\$1,200-1,800



246

OVAL CARRIER

Pine and maple, original chrome yellow painted finish, four fingers, bentwood ash handle with copper tacks (professionally replaced), good condition, c. 1840-1850, 4" h (to rim), 8" h (to top of handle), 10 7/8" l, 7 1/2" w.

\$300-500



247

FANCYWORK SEWING ITEMS, AND HERB LABEL BOOK

Sewing bags, needleholders, sewing rollups, Sister's belt with green silk and scissors, emery, needlebook and more, embroidered needlebook gift "From Cora, Jeanni M. Peases", with silk ties, embroidered cotton sewing kit with attached strawberry emery and pockets, silk ties, blue tomato cushion, needlebook and strawberry emery, two dolls, gold silk ribbons with embroidered needleholders, and small porcelain Shaker dressed doll in blue, in a Canterbury box, and small Shaker herb book, Cynthia Elise Rubin, Catawba Press, 1984, with four tipped-in 19th c. labels from Watervliet, NY, (12 pieces).

\$400-700



248

SHAKER SISTER'S ROLLUP SEWING KITS

Leather, brown silk ribbon ties, spool holder with embroidered needleholder, brown silk bow ribbon pin with bag, needle heart, scissor sheath, needlebook, embroidered rollups, (7 pieces).

\$300-600



249

THREE SHAKER CLOTHES HANGERS

Pine and maple, straight hanger dated "1823", and initialed "D+A", curved hanger with steel hook initialed "IBR".

\$300-600



250

STANDING BUTTER WORKER

Maple and pine, original gray/green stained finish, triangular shaped slanted shelf, 4" sides, octagonal roller (34" l) with turned handle (5" l), cross-stretcher support at base, c. 1880, 35" h, 18" w, (Kitty Haas collection).

\$300-500



251

STONEWARE JUG

Brown glazed top part with applied handle, blue stenciled letters "Shaker Brand Ketchup, E.D. Pettengill Co., Portland, ME", (ex. Howard and Flo Fertig).

\$200-400



252

LARGE OVAL BOX

Maple and pine, waxed yellow painted finish, five fingers, light blue floral wallpapered interior, (similar examples from Canterbury, NH and Sabbathday Lake, ME), 6" h, 12 7/8" l, 9 1/2" w, (ex. Howard and Flo Fertig).

\$800-1,200



253

VERY SMALL OVAL BOX

Pine and maple, original natural finish, three fingers, pencil script notations on top and bottom "Alice...July 1, 1856" and "Alberts weight, 68, size...May 10, 1885", excellent condition, 1 1/8" h, 3 1/4" l.

\$800-1,200



254

DOOR LATCH AND SHOP ENTRY BELL

Classic form, cast iron Shaker door latch, with spade shaped top and bottom, 10" h; and a rare Shop Bell, cast iron on a spring mechanism, attached to a rectangular pine board, (note: used to alert a Shaker Sister that customers have entered the Fancy Goods Shop), (Kitty Haas collection), 19 1/2" l board, 6" w. \$300-500



255

BENCH

Pine, original weathered gray painted finish, plank top with rounded edge on one end, and flat on opposite end, shaped skirt, bootjack ends, (note: probably used in a Shaker barn setting), (Kitty Haas collection), 18" h, 60" l, 11" d.

\$300-500



256

SISTER'S STORAGE BOX

Pine, original yellow stained finish, hinged lid, breadboard top, brass hook and eye closure, six board construction, signed under lid on right side "Property of Alice Howland (1884-1973), Shaker Village", (note: small mouse hole in upper right corner, and small part of left hand breadboard missing), 12 3/4" h, 28" l, 15" d.

\$300-500



257

MECHANICAL CHOPPING DEVICE

Revolving tin tub with interior blade, with multiple levers and gears, and a handle which controls the chop blade, all mounted on a pine plank, (note: possibly to chop apples and other fruit), (Kitty Haas collection), 13"h, 8" dia.

\$200-400



258

FRAMED PRINT

"East View of the Brick House, Church Family, Hancock", with Shaker figures in a horse drawn carriage and walking in the community, molded frame painted black, 22 1/2" x 27 1/2" (sight), 26 3/4" x 31 1/2" (frame).

\$200-400



259

SISTER'S GLOVE AND DOLL CLOTHING

Framed white wool, stitch initialed in blue "AR", along with pieces of doll undergarments.

\$100-300



260

EARLY SHAKER WORK TABLE

Pine and maple, original red stained finish, large single board top (31" d), (shows a split with filler), over a full-length dovetailed drawer with original turned pull, deep skirt (with some repairs), all over square to turned legs with a medial swell, c. 1820-1830, 27" h, 50 1/2" l, 31" d.
\$700-1,000



261

BRUSHES

Three maple scrub brushes, with natural horsehair bristles, 7", 6 1/4" and 4" l; Two oval shaped, long handled clothes brushes, one with black bristles, 12 1/4" l, one with very fine white bristles, 12" l; (Kitty Haas collection), note: old auction tag "Shaker Brush".
\$200-400



262

SHAKER BUCK SAW

Maple, natural patinated finish, curved ends with tightening wing nut, blade with finely turned adjustments, (Kitty Haas collection), 11" h, 26" l.
\$200-400



263

CUTLERY BOX

Tiger birch, original varnish finish, central divider has finely cutout handle, dovetailed sides, symmetrically placed screws on bottom board, Canterbury or Enfield, NH, c. 1850, very good condition, 4 3/4" h (sides), 7" h (to top of handle), 13 3/4" l, 8 1/4" w.
\$400-600



264

SISTER'S SLIDE LID BOX

Poplar and pine, original reddish stained varnish finish, used to store knitting needles, Sister's paper label inside the end board "Mary Page", labeled inside "G.A.M.", c. 1850, 3 3/8" h, 12" l, 3 1/2" w, (ex. the Dr. George A. Marks collection; note: Dr. Marks collected pieces primarily from Canterbury and Enfield, NH).
\$300-500



265

APPLE SORTING BOX

Maple, original varnish finish, canted sides, completely held together with symmetrically placed screws all sides and bottoms, shows a split to bottom board, smooth patinated finish, 6 3/4" h, 23 3/4" l, 15" w.

\$400-600



266

SHAKER SAP BUCKETS

Pine, yellow painted finish, side clips for nailing to sugar maple tree, larger pail is stamped on bottom "N.F. Shakers, Enfield, N.H.", 11 1/2" h, 12" dia, smaller pail is 9 1/2" h, 12" dia; also including a steel tree tap for running the sap into the pails.

\$300-500



267

SIDE CHAIR

Maple, original light red/brown finish, tall flame finial with medial scribe line, three finely shaped ladders, striped green and black tape seat, Enfield, NH, c. 1840, 16 1/2" seat h, 41" overall h.

\$600-800



268

CHILD'S ROCKING CHAIR

Maple and birch, extended acorn finials, three graduated slats, gray tape seat, Mt. Lebanon, NY, 13" seat h, 36" overall h.

\$400-600



269

NIDDY-NODDY AND FOOTREST

Carved oak, original varnish finish with patina, old silk ribbon for hanging on peg, very finely carved and shaped, through mortised and wood pegged, 17 1/2" l, 13" w; Pine and hardwood, original black painted finish, slanted front with turned legs and side stretchers, "Mt. Lebanon" decal on bottom (scratched), 11 1/2" sq, 5" and 7" h; (Kitty Haas collection).

\$300-500



270

**PHOTOGRAPHS OF SHAKER SISTERS, AND
POSTCARD**

Two framed photographs, one of Sister Bertha Lindsay and Sister Gertrude M. Soule decorating a Christmas tree, 7 3/4" x 9 3/4" (sight), 8 3/4" x 10 1/2" (frame), the other of Sister Jennie Wells holding a Shaker dressed doll, tagged "With all my Love, Lovingly, Sister Jennie M. Wells", matted and framed, 4 1/2" x 3 1/2" (sight), 11" x 8 3/4" (frame); along with a postcard of Sister Cora Helena Sarle painting, c. 1955.

\$100-200

